



12 December 2022

PRICAL s.r.l.
Zona Ind. le P.I.P. Sambucheto - Via Fratelli Maggini, 18
62019
Recanati
Italy
Macerata

Project Name: 22-002916 - General Evaluation 2022
Project Address: // Italy
Sample Test Name:

Ref.: COMPATIBILITY Test Report for General Evaluation 2022 -

Dear Teresa Rusi,

The Dow construction laboratory has completed the compatibility testing in support of your above referenced project.

The compatibility tests are performed in accordance to the Modified ASTM C1087 or ETAG 002 Paragraph 5.1.4.2.5.

A summary of this laboratory testing / evaluation and application recommendations is given below.

1. Sample Nr 253495	Substrate Details
Substrate Type	EPDM Gasket
Substrate Mnf Name / Supplier Name	PRICAL SRL
Mnf code / Batch Number	210922
Substrate Description	EPDM SILIC78
Sealant	Application Recommendation
DOWSIL™ 791 Silicone Weatherproofing Sealant	Approved for Full Contact
DOWSIL™ 795 Silicone Building Sealant	Approved for Full Contact
DOWSIL™ 796 Windows & Installation Neutral Silicone Sealant	Approved for Full Contact
DOWSIL™ 895 Structural Glazing Sealant	Approved for Full Contact

DOW HIGH PERFORMANCE BUILDING

Imagine the Possibilities

consumer.dow.com/Construction

DOWSIL™

silicones by

AMERICAS

Sealant Test Lab, DC-4, Lab 3A4
2200 W.Salzburg Road
Auburn, MI 48611
USA
Phone : + 1-800-346-9882
americas.cool@dow.com

ASIA

Shanghai Dow Center
936 Zhangheng Road
Pudong District, Shanghai
201203 P. R. China
Phone: +86 21 38511100
asia.cool@dow.com

EMEAI

Parc Industriel – Zone C
B-7180 Seneffe
Belgium
Phone: + 32 (0) 64 511 156
Fax: +32 (0) 270 62 319
emeai.cool@dow.com



12 December 2022

DOWSIL™ 983 Structural Glazing Sealant	Approved for Full Contact
DOWSIL™ 993 Structural Glazing Sealant	Approved for Full Contact
DOWSIL™ 995 Silicone Structural Sealant	Approved for Full Contact

Dow aims to provide high quality service and traceability of our test results to make them more meaningful and value added. To do so we need your help in providing us some information about the substrates you wish us to test, such as Project, vendor, product name and batch number as a minimum. This helps us to maintain our database and check for statistical changes over time that may occur as well as manage the risk of any quality or future claims. As a result if we don't receive this type information we may also limit the type and scale of warranty that we issue as this is linked to risk management and exposure to our recommendations. We appreciate your support on this important quality assurance aspect.

Application recommendations are based on Dow laboratory testing, evaluation and technical specifications.

The results of the test method above indicate whether or not the Dow sealant tested is negatively impacted by contact with the test material sampled. Dow will not comment on whether the Dow sealant will affect the test material sampled. You must consult with the supplier of the sample to receive their statement on compatibility.

The results of the compatibility testing are only valid as long as the supplier certifies that neither the formulation nor manufacturing process for these materials has been changed.

Dow cannot control any formulation and process changes or lot to lot variation from the sample which may affect compatibility.

To ensure full compatibility between materials, we recommend that you consider the use of an equivalent Dow product or solution for your application. For more information and assistance in product selection, please contact your Dow High Performance Building Sales Application Engineer.

Dow must test all eventual other substrates and accessory materials that come in contact with our silicone sealant equally. A sealant recommendation will be based on both this review and eventual other results of our laboratory testing.

Dow supports the use of our sealants in the above referenced projects based on details received and when used in accordance with the recommendations in this letter, in the print review letter and the procedures summarized in the Dow Construction Technical Manuals located under <http://www.dow.com/construction>

DOW HIGH PERFORMANCE BUILDING

Imagine the Possibilities
consumer.dow.com/Construction

DOWSIL™

silicones by 

AMERICAS

Sealant Test Lab, DC-4, Lab 3A4
2200 W.Salzburg Road
Auburn, MI 48611
USA
Phone : + 1-800-346-9882
americas.cool@dow.com

ASIA

Shanghai Dow Center
936 Zhangheng Road
Pudong District, Shanghai
201203 P. R. China
Phone: +86 21 38511100
asia.cool@dow.com

EMEAI

Parc Industriel – Zone C
B-7180 Seneffe
Belgium
Phone: + 32 (0) 64 511 156
Fax: +32 (0) 270 62 319
emeai.cool@dow.com



12 December 2022

For any queries in relation to those topics, please contact your respective Dow Construction contacts or the Dow Construction AETS laboratory at +32 64 888524. More information on Dow product offering can be obtained through our Technical Customer Service : <http://www.dow.com/construction>.

Remarks: Dow has taken some pictures for clarification of the test results. Please refer to the Appendix for these pictures.

Sincerely,

Sebastien Dath
Facade Engineering & Architectural Design Manager EMEA

DOW HIGH PERFORMANCE BUILDING

Imagine the Possibilities

consumer.dow.com/Construction

DOWSIL™

silicones by

AMERICAS

Sealant Test Lab, DC-4, Lab 3A4
2200 W.Salzburg Road
Auburn, MI 48611
USA
Phone : + 1-800-346-9882
americas.cool@dow.com

ASIA

Shanghai Dow Center
936 Zhangheng Road
Pudong District, Shanghai
201203 P. R. China
Phone: +86 21 38511100
asia.cool@dow.com

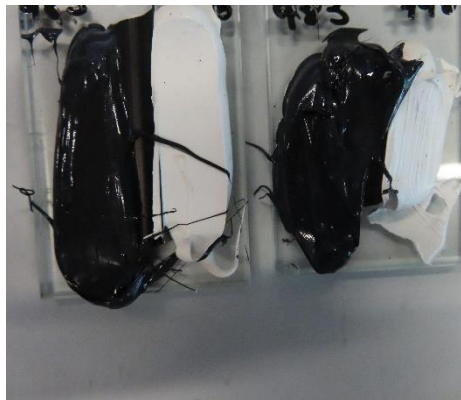
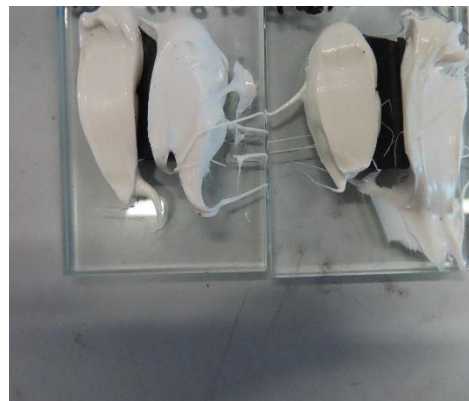
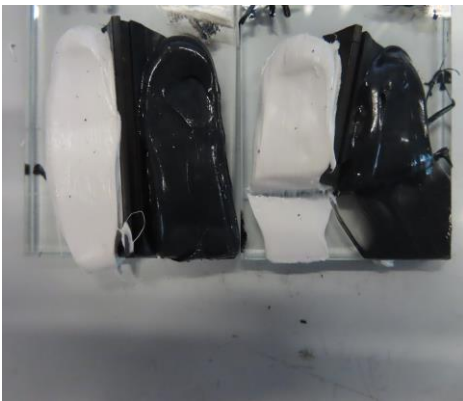
EMEA

Parc Industriel – Zone C
B-7180 Seneffe
Belgium
Phone: + 32 (0) 64 511 156
Fax: +32 (0) 270 62 319
emea.cool@dow.com



12 December 2022

Please find herewith some pictures that Dow has taken during the testing.



DOW HIGH PERFORMANCE BUILDING

Imagine the Possibilities

consumer.dow.com/Construction

DOWSIL™

silicones by 

AMERICAS

Sealant Test Lab, DC-4, Lab 3A4

2200 W.Salzburg Road

Auburn, MI 48611

USA

Phone : + 1-800-346-9882

americas.cool@dow.com

ASIA

Shanghai Dow Center

936 Zhangheng Road

Pudong District, Shanghai

201203 P. R. China

Phone: +86 21 38511100

asia.cool@dow.com

EMEA

Parc Industriel – Zone C

B-7180 Seneffe

Belgium

Phone: + 32 (0) 64 511 156

Fax: +32 (0) 270 62 319

emeai.cool@dow.com